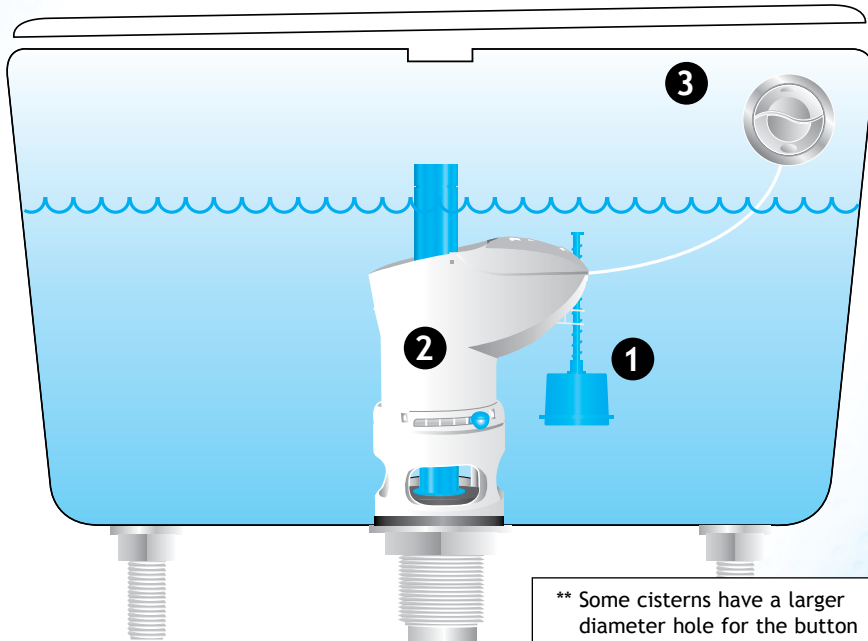


STAGE 3

Testing and adjustments

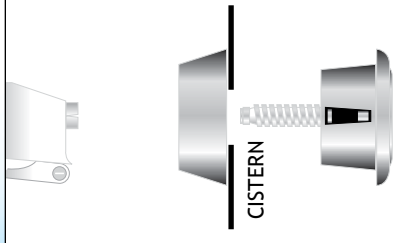
- 1 To adjust full flush water volume, rotate the float down to increase the volume of water flushed, or upward to reduce it.
- 2 To adjust partial flush water volume, slide lever at variflush base to the left to decrease the volume of water flushed, or to the right to increase it.
- 3 Ensure desired flush is achieved prior to refitting lid.



For servicing of the variflush valve the base of the unit remains in place. Simply separate the unit by twisting as in stage 2 of the fitting instructions.

Please retain these instructions for reference.

** Some cisterns have a larger diameter hole for the button please see this diagram.



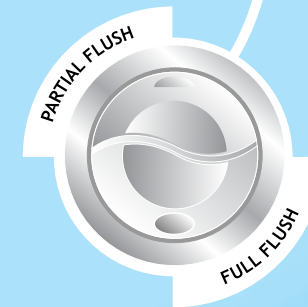
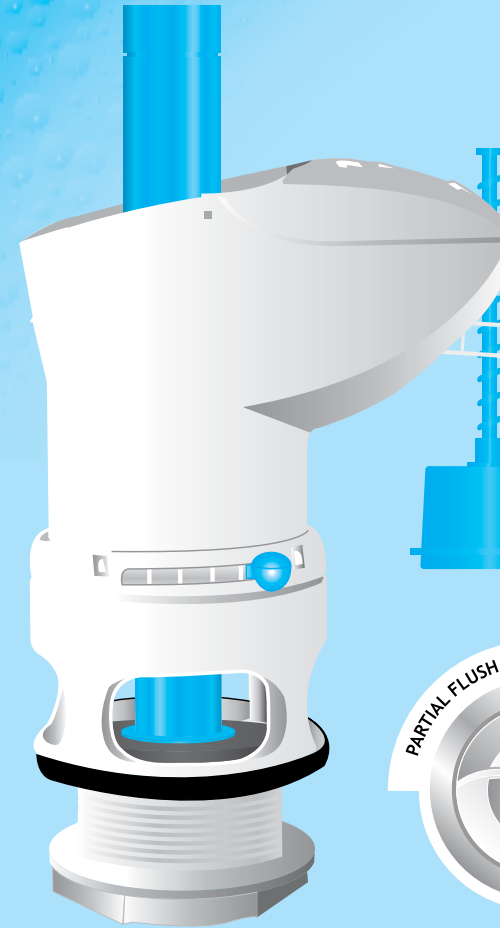
Opella Limited
Twyford Road, Rotherwas Industrial Estate, HEREFORD HR2 6JR, England.
t: +44 (0) 1432 357331 f: +44 (0) 1432 264014 w: www.opella.co.uk e: sales@opella.co.uk

installation guide • fitting instructions

Torbeck[®] variflush[®]

drop valve

- Adjustable height
- Push button cable control
- Dual flush with full & partial adjustment
- Internal overflow
- Easy to install:
Fits most cisterns
- Made in the UK



WRAS
APPROVED
PRODUCT

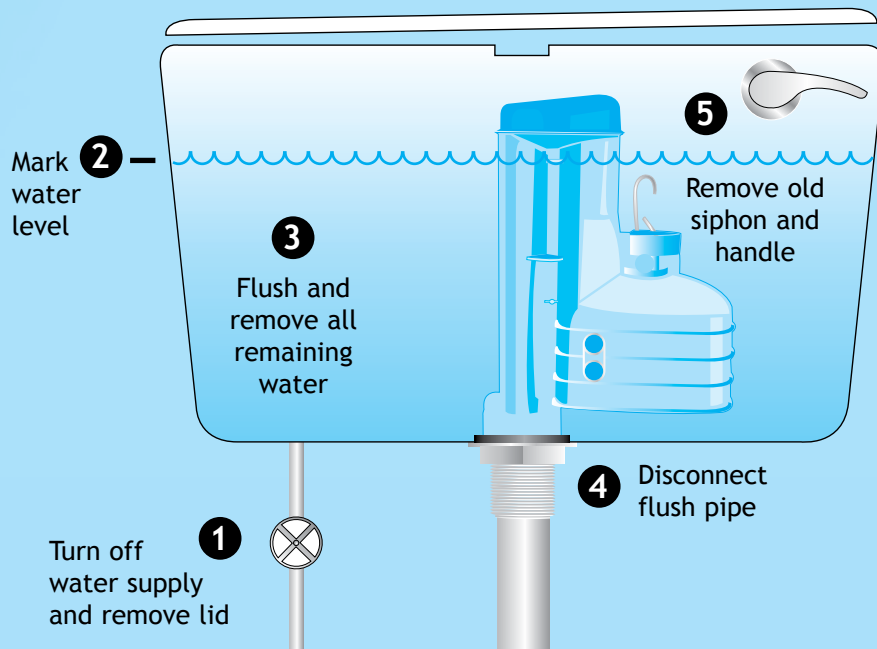
MADE IN THE U.K.

Opella
plumbing innovations

STAGE 1

Pre-installation

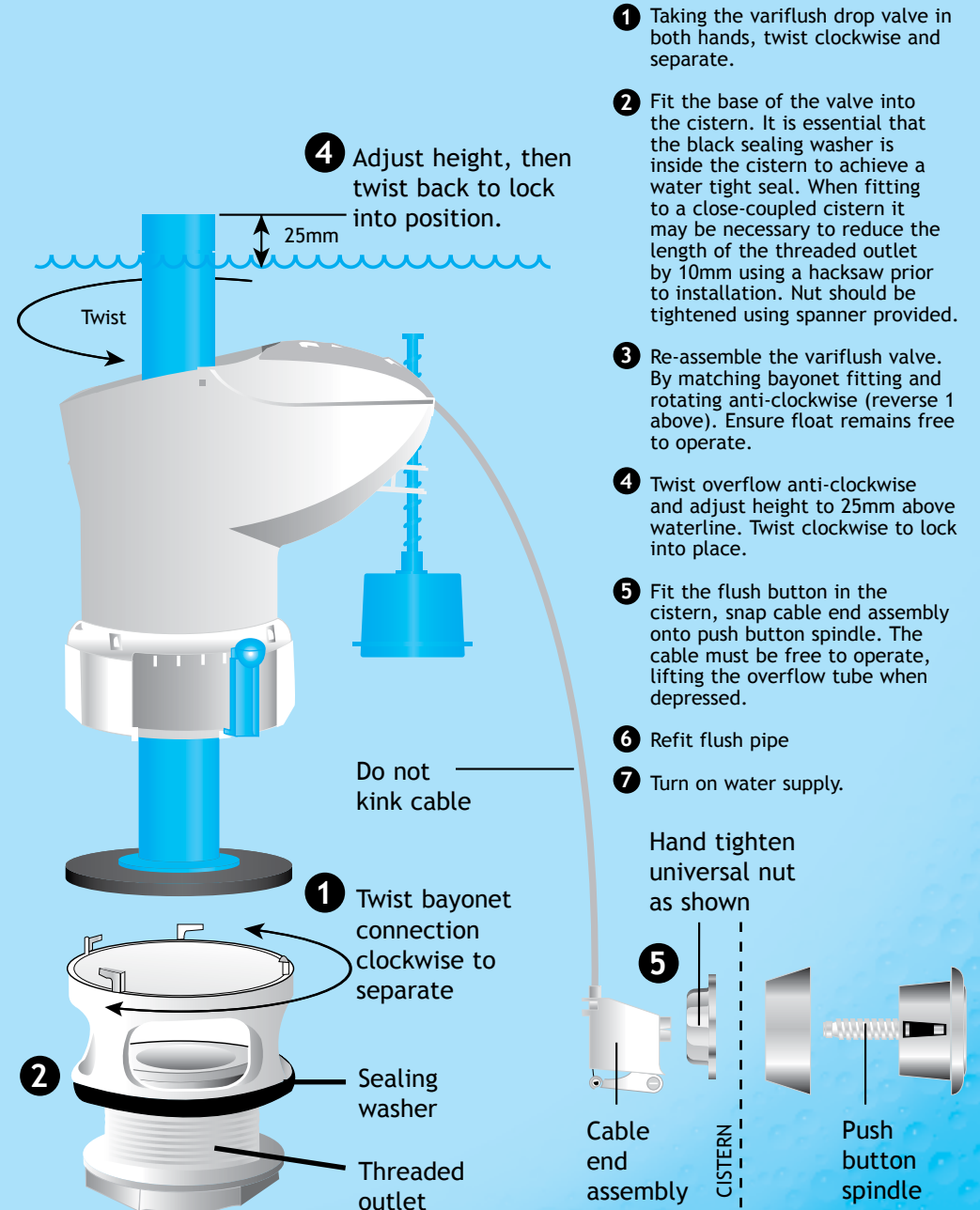
- 1 Turn off water supply to cistern and remove cistern lid.
- 2 While still full, mark the normal water level on the inside of the cistern.
- 3 Flush the cistern and remove all remaining water with a sponge or cloth.
- 4 Disconnect flush pipe.
- 5 Remove old siphon and existing handle or button.



Note: Ensure the top of the new variflush valve is below the lowest overflow point of the cistern including all apertures.

STAGE 2

Fitting your Torbeck® Variflush® valve



** See reverse for exceptions